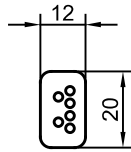
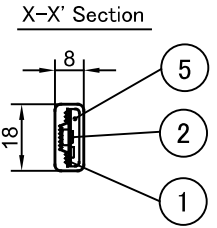
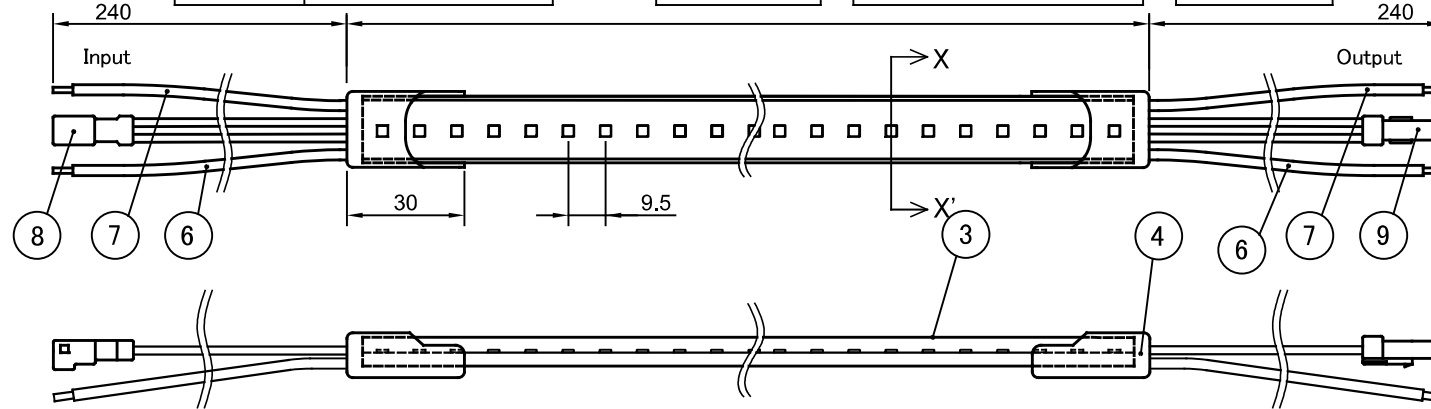
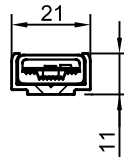


Product Name	Tape Light Addressable	Scale	1:2 (A4)
--------------	------------------------	-------	----------

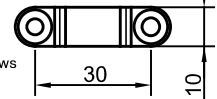
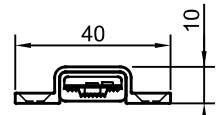
Product No.	Length	Basic Length	Multiple Number of basic length	End Cap Length
TLD-ADR-F	L = 114 ~ 1026 + 10mm	57mm (6LEDs)	2 ~ 18	10mm
TLD-ADR-S	L = 114 ~ 1026 + 10mm	114mm (12LEDs)	1 ~ 9	
TLD-ADR-L	L = 171 ~ 1026 + 10mm	171mm (18LEDs)	1 ~ 6	



Cross-sectional sizes when installed with FJS00-TA



Cross-sectional sizes when installed with FJB00-TA



Please use the flat head screws for hole diameter 4.5mm.

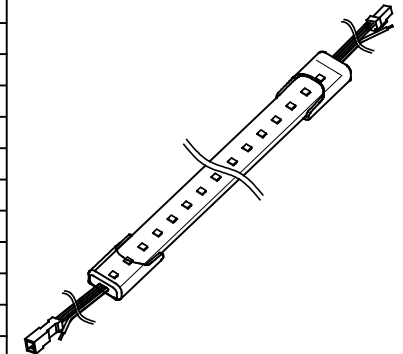
Third-angle projection method (Unit : mm)

※When connecting products and power supplies in parallel in multiple systems, make sure that the types and lengths of the wires in each system are the same to prevent differences in brightness and color between the products.

Length(m)	~1
Tolerance(mm)	+10 ~ -10

Product Specifications				9	DMX Signal Send Cable	Silicone rubber coating	White , Waterproof Connector (JWP series, 2pin)																																	
Pitch Type	Fine Pitch	Standard Pitch	Long Pitch	8	DMX Signal Input Cable	Silicone rubber coating	Black , Waterproof Connector (JWP series, 2pin)																																	
Product No.	TL-ADR-F	TL-ADR-S	TL-ADR-L	7	Lead Wire (V-)	Silicone rubber coating	Black , AWG20 (0.5sq)																																	
Length	114mm ~ 1026mm + End-caps 10mm		171mm ~ 1026m + End-caps 10mm	6	Lead Wire (V+)	Silicone rubber coating	Red , AWG20 (0.5sq)																																	
Weight	180 g/m			5	Filler	Silicone rubber	Clear																																	
Input Voltage	DC24V			4	End cap	Silicone rubber	Clear																																	
Power Consumption	13W/m	12W/m		3	Case	Silicone rubber	Clear																																	
Color	Red, Green, Blue			2	Color LED	SMD LED																																		
Luminous Flux	Red: 140 lm/m, Green: 350 lm/m, Blue: 60 lm/m			1	FPC	Polyimide	Flexible Printed Circuits																																	
Beam Angle	115°			<table border="1"> <thead> <tr> <th>Parts Name</th> <th>Material</th> <th>Note</th> </tr> </thead> <tbody> <tr> <td colspan="3">Parts List</td> </tr> <tr> <td colspan="3">Accessories (Option)</td> </tr> <tr> <td>1</td> <td>Polycarbonate Rigid Channel FJS00-TA</td> <td>Length=1000mm</td> </tr> <tr> <td>2</td> <td>Polycarbonate Mounting Bracket (for curvy line) FJB00-TA</td> <td>5pcs per pack Please use 5pcs per mater.</td> </tr> <tr> <td>3</td> <td>DMX Input Cable for XLR3 WCADR-XLR3C</td> <td>Length=1000mm waterproof type except XRL3</td> </tr> <tr> <td>4</td> <td>DMX Input Cable for XLR5 WCADR-XLR5C</td> <td>Length=1000mm waterproof type except XRL5</td> </tr> <tr> <td>5</td> <td>DMX Input Cable for RJ45 WCADR-RJ45C</td> <td>Length=1000mm waterproof type except RJ45</td> </tr> <tr> <td>6</td> <td>DMX Relay Cable WCADR-DMXRC</td> <td>Length=1000mm waterproof type</td> </tr> <tr> <td>7</td> <td>Power and DMX Relay Cable WCADR-DCDMXRC</td> <td>Length=1000mm waterproof type</td> </tr> <tr> <td>8</td> <td></td> <td></td> </tr> </tbody> </table>				Parts Name	Material	Note	Parts List			Accessories (Option)			1	Polycarbonate Rigid Channel FJS00-TA	Length=1000mm	2	Polycarbonate Mounting Bracket (for curvy line) FJB00-TA	5pcs per pack Please use 5pcs per mater.	3	DMX Input Cable for XLR3 WCADR-XLR3C	Length=1000mm waterproof type except XRL3	4	DMX Input Cable for XLR5 WCADR-XLR5C	Length=1000mm waterproof type except XRL5	5	DMX Input Cable for RJ45 WCADR-RJ45C	Length=1000mm waterproof type except RJ45	6	DMX Relay Cable WCADR-DMXRC	Length=1000mm waterproof type	7	Power and DMX Relay Cable WCADR-DCDMXRC	Length=1000mm waterproof type	8		
Parts Name	Material	Note																																						
Parts List																																								
Accessories (Option)																																								
1	Polycarbonate Rigid Channel FJS00-TA	Length=1000mm																																						
2	Polycarbonate Mounting Bracket (for curvy line) FJB00-TA	5pcs per pack Please use 5pcs per mater.																																						
3	DMX Input Cable for XLR3 WCADR-XLR3C	Length=1000mm waterproof type except XRL3																																						
4	DMX Input Cable for XLR5 WCADR-XLR5C	Length=1000mm waterproof type except XRL5																																						
5	DMX Input Cable for RJ45 WCADR-RJ45C	Length=1000mm waterproof type except RJ45																																						
6	DMX Relay Cable WCADR-DMXRC	Length=1000mm waterproof type																																						
7	Power and DMX Relay Cable WCADR-DCDMXRC	Length=1000mm waterproof type																																						
8																																								
Bending Radius	R80 mm Vertical																																							
Dimming Signal Standard	DMX512 Standard																																							
Compatible DMX Controller	DMX Controller Conforming to DMX512 Standard * Please contact our sales for recommended models.																																							
DMX Address	From the top, 1ch: R / 2ch: G / 3ch: B ... will be addressed automatically. When concatenated, DMX addresses will be consecutive from the unit in front.																																							
DMX Control Length	57mm Unit	114mm Unit	171mm Unit																																					
Number of DMX Channels	54 channels / m	27 channels / m	18 channels / m																																					
Maximum DMX Control Length	9,690mm	19,380mm	29,070mm																																					
Max Unit Connectable	6.2m(1,026mm x 6 + 端部長) *If you connect more products, the brightness and color will vary greatly.																																							
Operating Temperature	-10 ~ 55°C		Indoor / Outdoor (IP67 rated)																																					

3D image



Drawn	Reviser	Approved
Kawasaki	Nakashima	Yamaguchi
2021.2.16	2024.4.5	2024.4.5

Please note that content described above may be changed without any advance notice

Atex Co.,Ltd

Ver 240405