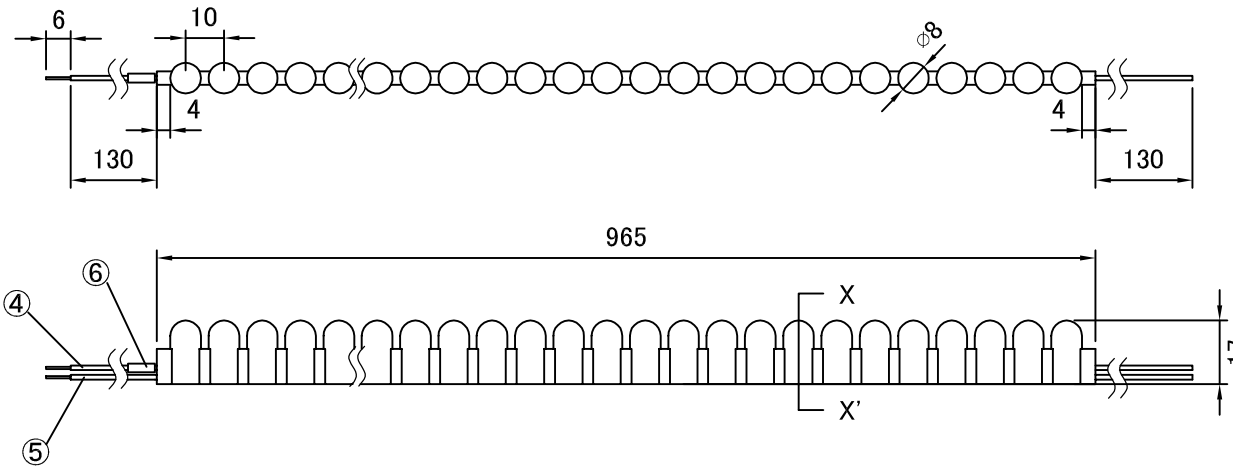
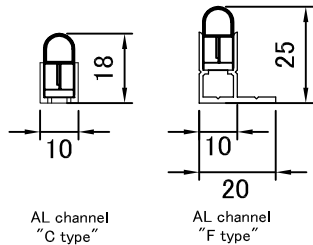


Product Name	Super Silicone Light	SP10-96C1□-□□	Scale	1 : 2 (A4)
--------------	-----------------------------	----------------------	-------	-------------------

Cross-sectional sizes
when mounted with channel



Third-angle projection method (Unit : mm)

Product Specifications				7	Insert	Silicone	3D				
Product No.	SP10-96C1□-□□			6	Color Tube						
Length	965mm			5	Lead wire Black(V-)	Silicone rubber coating					
Cutting points	RED: Every four LEDs. ALL OTHER COLORS: Every three LEDs.			4	Lead wire Red(V+)	Silicone rubber coating					
Weight	100g/m			3	Case	Silicone rubber					
Input Voltage	DC12V		Power Consumption	6W/m	2	LED					
Color Temperature	L-11: 2800K	W-11: 6000K	R-01: RED	B-11: BLUE	1	FPC					
Luminous Flux	180 lm/m	245 lm/m	Contact factory			Parts List					Note
Beam Angle	50°				Accessories						
Operating Temperature	-10 ~ 60°C			1	AL Rigid channel "C type" Length=1000mm for straight line installations. FAS00-01S						
Environment	IP67 rated. Water and dust resistant. Product should not reside in standing water.			2	AL Flexible channel "C type" Length=1000mm for flexible line installations. FAC10-01S						
Bending Radius	45° horizontal. 10° vertical			3	AL Rigid channel "F type" Length=1000mm for straight line installations. FAS00-03						
Max units connectable	Three(3) strands maximum per run			4	AL Flexible channel "F type" Length=1000mm for flexible line installations. FAC20-05S						
				5	Spring insertion and securing tool. FAB00-02						
				6	Secures light strip to aluminum channel. FAB00-01 (Qty:100pcs per pack)						
				7			Design	Reviser	Drawing Check	Approval	
				8			Takaki	Etou	Yamaguchi	Kimori	
							Jun27 '08	Jun27 '18	Jun27 '18	Jun27 '18	

Please note that content described above may be changed without any advance notice.

Atex Co., Ltd.

Ver 180627