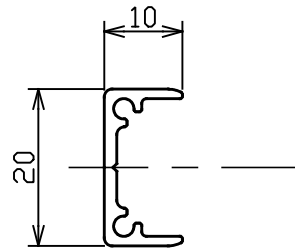


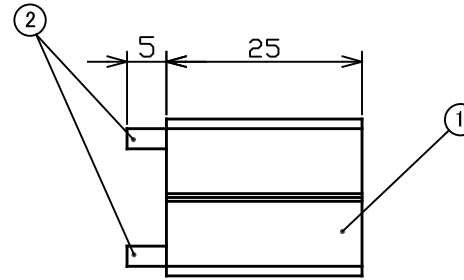
## General tolerance

6 or below	$\pm 0.3$
6 to 15 or below	$\pm 0.4$
15 to 30 or below	$\pm 0.6$
30 to 50 or below	$\pm 0.8$

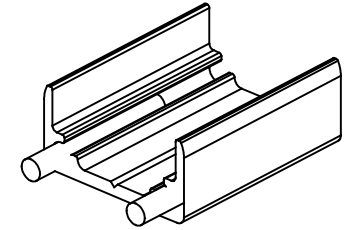
Tolerances are at 25° C.



Side view (1/1)



Top view (1/1)



3D image

## Precautions during construction:

1. Used when covering the ends (end caps) after installing **tape Light Diffuser Indoor** in a straight aluminum channel (FAS00-01TD3).
2. Be sure to secure the fixture with screws.
3. The minimum bending radius of the fixture must be R150mm or more in the direction perpendicular to the light axis.
4. When mounting vertically to a wall, follow the instructions in the instruction manual and use an appropriate L-shaped bracket at the bottom to prevent the fixture from slipping off. Be careful not to pinch the lead wires.

## Recommend examples of screws.

When fixing to a tree: Wood screws (nominal diameter 4.1, round head)

Unit(mm)

2	Roll Pin	2	Stainless steel (SUS420J2)
1	Aluminum Cover for End Caps	1	Aluminum (anodized treatment)
Parts Name		Quantity	Material / Processing
Specifications			Model Name
RoHS compliant Weight: 4g/pcs 2pcs per pack			Tape Light Diffuser Indoor
Scale			Product Name
1 : 2 (A4 Size)			Aluminum Cover for End Caps
Drawn			Product Name
Kawasaki			KATD3-EA
Reviser			
Approved			
2025.11.11			
2025.11.11			