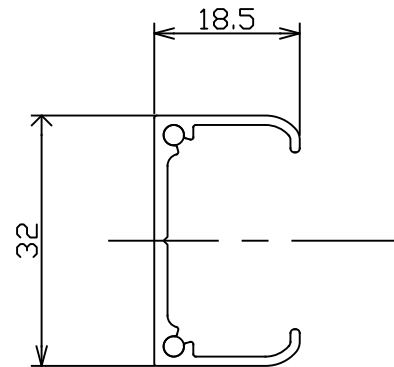
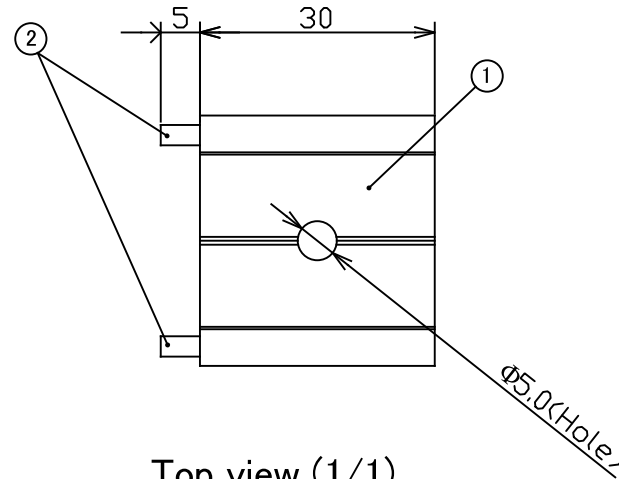


General tolerance

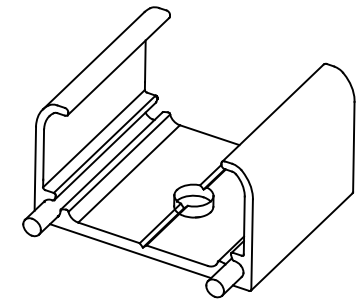
6 or below	±0.5
6 to 15 or below	±0.6
15 to 30 or below	±0.8
30 to 50 or below	±0.9



Side view (1/1)



Top view (1/1)



3D image

Installation precautions:

1. Used to cover the end caps when the Tape Light Addressable (TL20ADR)/Tape Light Wide (TL08) is attached to the straight aluminum channel (FAS00-01TA4).
2. Be sure to secure with screws.
3. When attaching vertically to a wall, follow the instructions in the instruction manual and use an appropriate L-shaped bracket at the bottom to prevent the fixture from slipping off.
Be careful not to pinch the lead wires with the L-shaped bracket.
4. Screws are not included. Please prepare commercially available screws according to the installation target.

Recommended examples of screws.

When fixing to a tree: Wood screws (nominal diameter 4.1, round head)

Unit (mm)

2	Roll pin	2	Stainless steel (SUS420J2)
1	Aluminum Mounting Bracket (for curvy line)	1	Aluminum
Parts Name		Quantity	Material / Processing
Specifications			Model Name
RoHS compliant Weight: 9g/pcs 2pcs per pack			Tape light addressable
Scale			Product Name
1 : 2 (A4 Size)			End Cover (for curvy line)
Drawn			Product No.
2025.2.5			KATA4-EA
Reviser			
Sakamoto			
Approved			
2025.3.3			