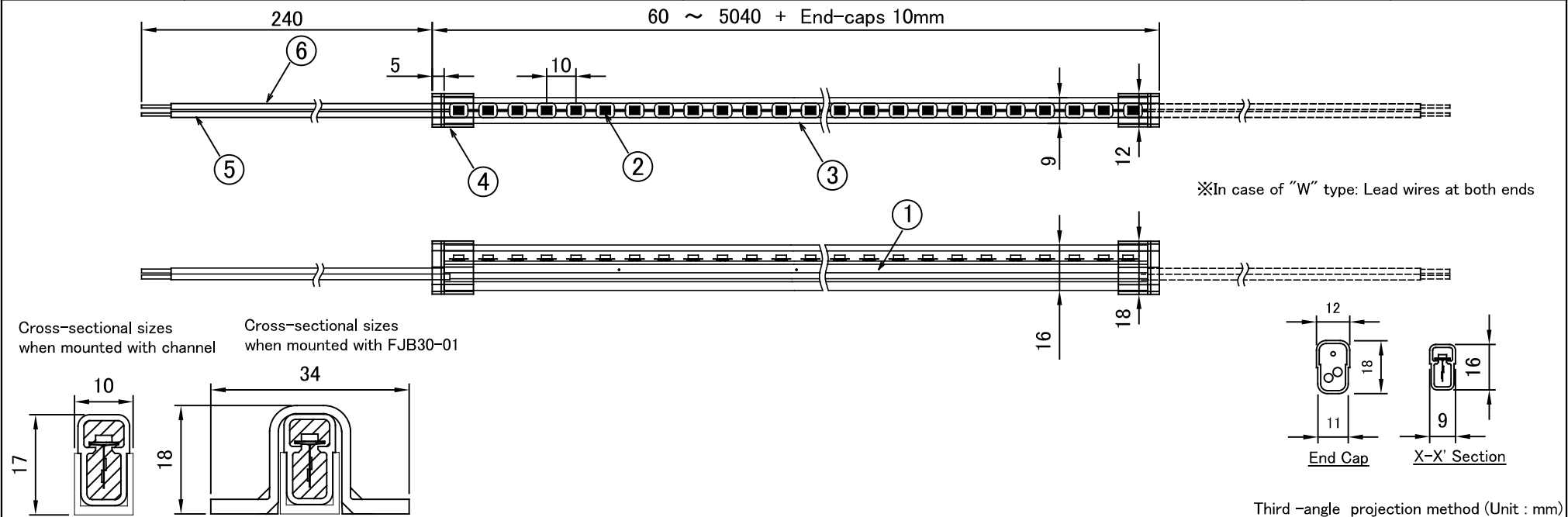


|              |                                   |                     |       |            |
|--------------|-----------------------------------|---------------------|-------|------------|
| Product Name | <b>Long Silicone Light Indoor</b> | <b>GM10-96A1□□K</b> | Scale | 1 : 2 (A4) |
|--------------|-----------------------------------|---------------------|-------|------------|



| Product Specifications |   |           |           |                   |           |           |           |   |         | 10              |  |                         | 3D        |               |           |  |
|------------------------|---|-----------|-----------|-------------------|-----------|-----------|-----------|---|---------|-----------------|--|-------------------------|-----------|---------------|-----------|--|
| Product No.            | GM10-96A1□□K ("W" type: GM10-96A1□□KW)          |           |           |                   |           |           |           |   |         | 9               |  |                         |           |               |           |  |
| Length                 | 60mm ~ 5040mm + End-caps 10mm                   |           |           |                   |           |           |           |   |         | 8               |  |                         |           |               |           |  |
| Cutting points         | 60mm (6 LED) *Customized length order available |           |           |                   |           |           |           |   |         | 7               |  |                         |           |               |           |  |
| Weight                 | 90g/m   |           |           |                   |           |           |           |   |         | 6               | Lead wire Black(V-)  | Silicone rubber coating |           |               |           |  |
| Input Voltage          | DC24V   |           |           | Power Consumption |           |           | 11W/m     |   |         | 5               | Lead wire Red(V+)  | Silicone rubber coating |           |               |           |  |
| Color Temperature      | 20: 2000K                                       | 25: 2500K | 28: 2800K | 30: 3000K         | 35: 3500K | 40: 4000K | 50: 5000K | 4 | End Cap | Silicone rubber |  |                         |           |               |           |  |
| Luminous Flux          | 820 lm/m  | 930 lm/m  | 1100 lm/m | 1180 lm/m         | 1190 lm/m | 1190 lm/m | 1210 lm/m | 3 | Case    | Silicone rubber |  |                         |           |               |           |  |
| Beam Angle             | 120°  |           |           |                   |           |           |           |   |         | 2               | LED  | SMD LED                 |           |               |           |  |
| Operating Temperature  | -10 ~ 40°C                                      |           |           |                   |           |           |           |   |         | 1               | FPC  |                         |           |               |           |  |
| Environment            | Indoor only                                     |           |           |                   |           |           |           |   |         | Parts List      |  | Note                    |           |               |           |  |
|                        |   |           |           |                   |           |           |           |   |         | Accessories     |  |                         |           |               |           |  |
| Bending Radius         | R30mm horizontal                                |           |           |                   |           |           |           |   |         | 1               | AL Rigid Channel Length=1000mm for straight line installations. FAS00-01S    |                         |           |               |           |  |
| Max units connectable  | 10.1m (5040mm × 2 + End-caps)                   |           |           |                   |           |           |           |   |         | 2               | AL Flexible Channel Length=1000mm for Flexible line installations. FAC10-01S | Design                  | Reviser   | Drawing Check | Approval  |  |
| Note                   | "(Standard)" type : Lead wires at one end.      |           |           |                   |           |           |           |   |         | 3               | Fixing Material 4 pieces per meter. FJB30-01                                 | Takaki                  | Etou      | Yanase        | Yamaguchi |  |
|                        | "W" type : Lead wires at both ends.             |           |           |                   |           |           |           |   |         | 4               |  | Aug19 '13               | May18 '22 | May18 '22     | May18 '22 |  |

Please note that content described above may be changed without any advance notice.